

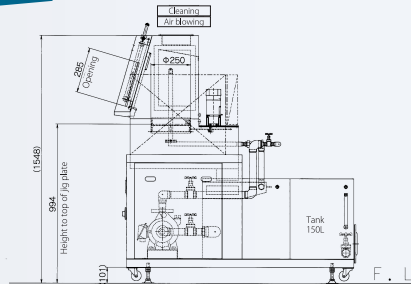
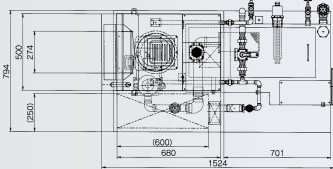
KATAOKA

SPC-032-B

Turn Table Type Washing Machine

Efficient, compact design.

Dimensional drawing (SPC-032-B)



- Effective use of small spaces
- Low cost
- Efficient and complete washing possible

Machine specifications

Body material	Stainless steel (For liquid contact)	Power supply	3-phase, AC 200 V, 50/60 Hz
Washing method	Turn table type + Fixed nozzles	Washing pump	AC 200 V, 50/60 Hz, 1.5 kW
Air blowing method	Turn table type + Fixed nozzles	Liquid heating	Plug-type electrical heater 10 kW
Washing pressure	0.2 MPa (Modification of pressure optional)	Rotating motor	With brake 60 W
Workpiece size for washing	Max. $\phi 200 \times H 200$ Table size $\phi 250$	Nozzles	21 for washing, 21 for air blowing (Positioned on top, bottom and sides)
Tank capacity	150 L	Filter	SUS wire netting type 250 μ
Approx. size of body	W 794 \times L 1,524 \times H 1,548 mm		

*The appearance and specifications are subject to change without previous notice in order to improve performance.

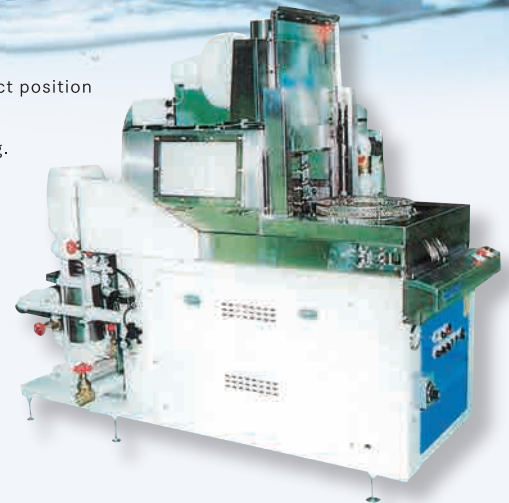
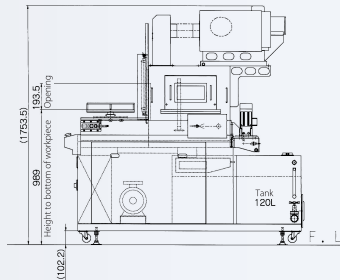
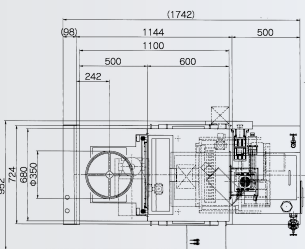
KATAOKA

SPC-302-B

2 positions Turn Table Type Washing Machine

This machine applied the new turn table system.

Dimensional drawing (SPC-302-B)



- Focuses on operability / Uses correct position stop mechanism
- Turn table provides efficient washing.

Machine specifications

Body material	Stainless steel (For liquid contact)	Washing pump	AC 200 V, 50/60 Hz, 1.5 kW
Washing method	Turn table type + Fixed nozzles	Liquid heating	Plug-type electrical heater 10 kW
Air blowing method	Turn table type + Fixed nozzles	Drive motor	With brake 60 W
Washing pressure	0.2 MPa (Modification of pressure optional)	Rotating motor	With brake 60 W
Workpiece size for washing	Max. $\phi 300 \times H 170$ Table size $\phi 350$	Nozzles	21 for washing, 21 for air blowing (Positioned on top, bottom and sides)
Tank capacity	120 L	Exhaust system	Steam mist collector SC-200, 0.2 kW
Approx. size of body	W 952 \times L 1,742 \times H 1,754 mm	Filter	SUS wire netting type 250 μ
Power supply	3-phase, AC 200 V, 50/60 Hz		

*The appearance and specifications are subject to change without previous notice in order to improve performance.