

KATAOKA

S-Series

Pass Through Type Washing Machine

The pass through function makes the washing process faster for not only pressed parts but also long parts with short cycle time.



- This series is our standard lineup that has been used in the metalworking industry by utilizing a broad range of applications for more than 40 years.
- The features of pass through type enable to wash large volume of parts pressed in short cycle time, long parts, returnable containers and trays as well, faster than another washing methods.
- The LD Type is equipped with a hot air generator to speed up the drying process even more.
- This series of machine can be easily customized by utilizing excellent options in order to satisfy customer's requirements.
- The general features of this series offer reliability even in either special or customized design.

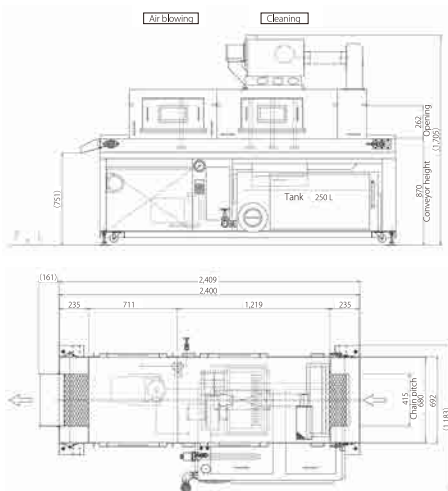
Basic Standard Pass Through Type

SPC-101-S

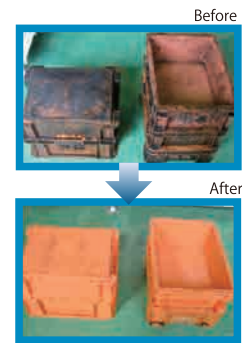
- Large volume washing possible
- Various options and sizes modifiable
- Conveyor with variable speed



■ Dimensional drawing (SPC-101-S)



Returnable container washing system



Purified water rinse specification



Blower draining specification



Customized example (Through pitch conveyor)



+Dryer (Equipped with dryer)

SPC-101-S-LD

- Add hot air drying to the SPC-101-S to improve the drying performance



Small (Equipped with small dryer)

SPC-101-S-LD (Mini)

- Cleaning and drying type
- Space saving design
- For small parts applications



Dryer

KHC-105-D

- Hot air dryer
- Can be integrated into existing line



*The pictures of the Oil Catcher and Bag Filter shown above are options.

Machine specifications

Model	SPC-101-S	SPC-101-S-LD	SPC-101-S-LD (Mini)	KHC-105-D
Body material	Stainless steel (For liquid contact)			
Washing method	Pass through type + Fixed nozzles			—
Drying system	—	Hot air injection type		
Air blowing method	Pass through type + Fixed nozzles			—
Washing pressure	0.2 MPa (Modification of pressure optional)			—
Workpiece size for washing	Max. W 400 × H 230 × L-		Max. W200×H230×L-	—
Workpiece size for drying	—	Max. W400×H230×L-	Max. W200×H230×L-	Max. W400×H230×L-
Tank capacity	250L		150L	—
Approx. size of body	W1,183×L2,409×H1,705	W1,183×L3,570×H1,183	W1,154×L2,171×H1,745	W981×L2,570×H1,640
Power supply	3-phase, AC 200 V, 50/60 Hz			
Conveyor speed	1~3m/min(variable)			0.3 to 2 m/min (Variable)
Washing pump	AC200V 50/60Hz 1.5KW			—
Liquid heating	Plug-type electrical heater 10 kW			—
Drive motor	Inverter-control, 0.1 kW	Inverter-control, 0.2 kW	Inverter-control, 0.1 kW	
Nozzles (Positioned on top, bottom, right and left)	78 for washing, 26 for air blowing		44 for washing, 22 for air blowing	—
Exhaust system	Steam Mist Collector SC-200, 0.2 kW			—
Conveyor net	SUS304 opening 20 (Integrated type)			—
Filter	SUS wire netting type 250 μ			—
Hot air heater	—	Electrical heater 10 kW×2	Electrical heater 10 kW×1	Electrical heater 10 kW×2